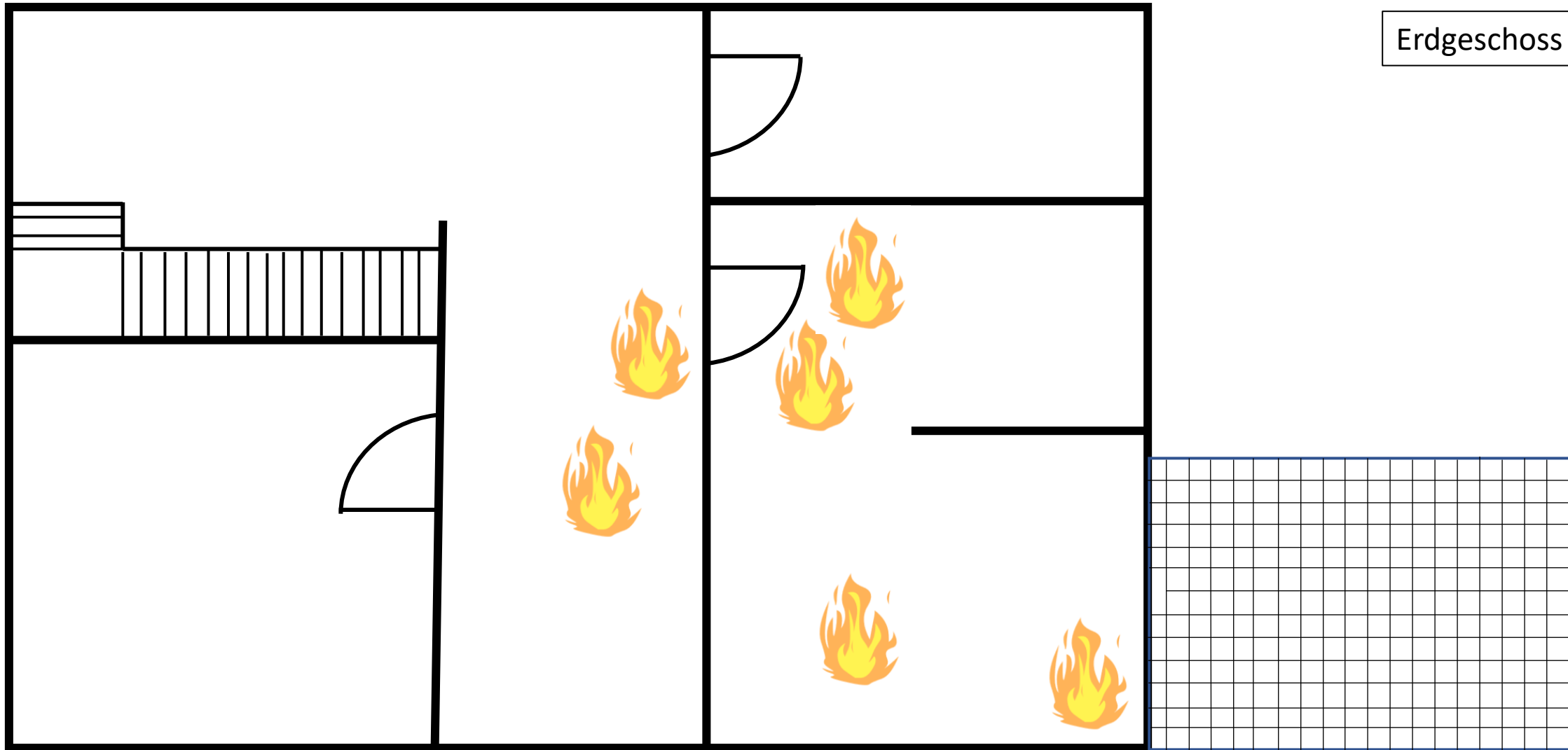
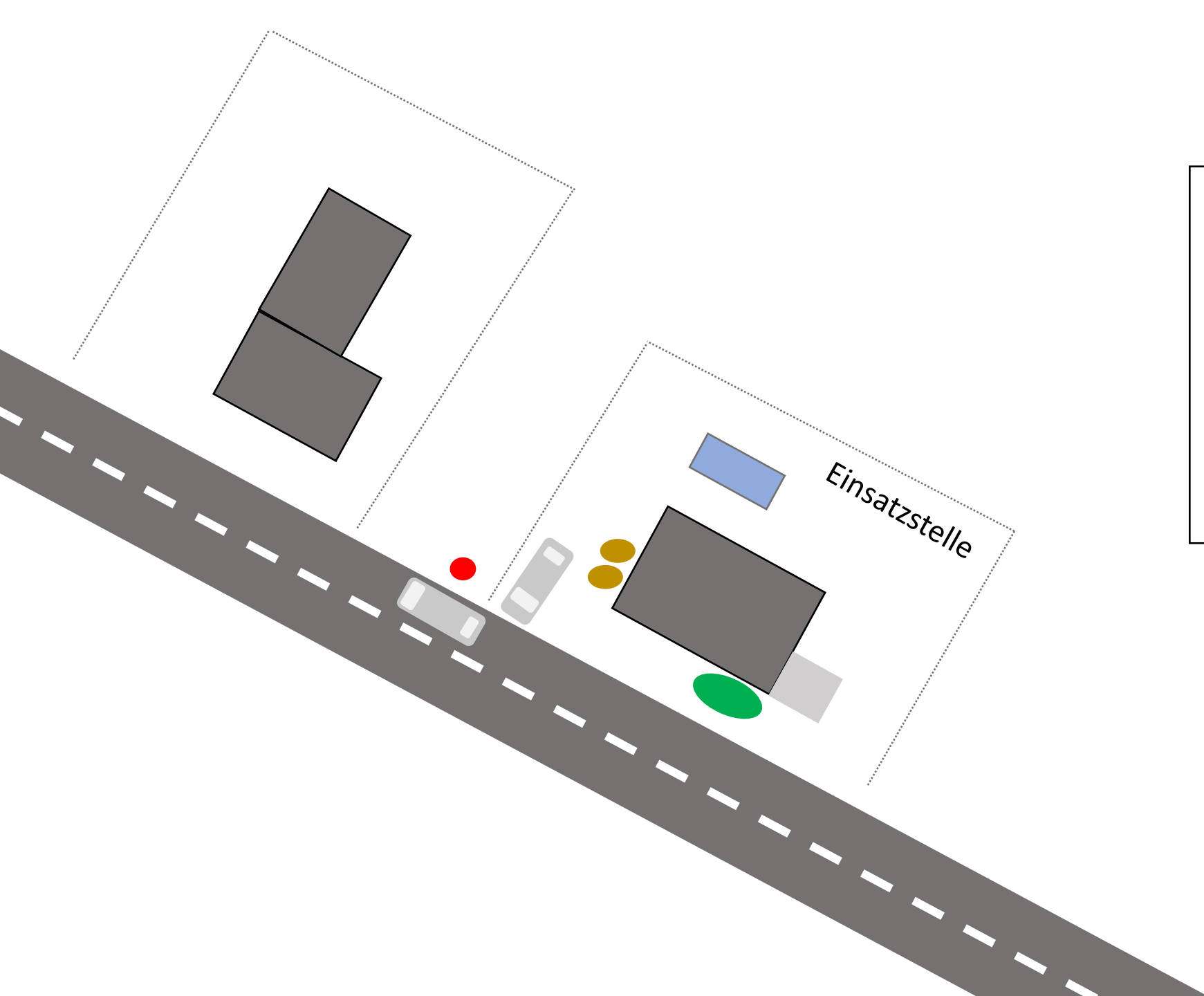

Informationen für Person 1A

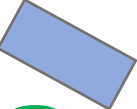




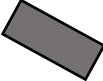
Infos zur Lage:

Eine Person befindet sich eingeschlossen in der Küche und kann sich nicht eigenständig befreien. Sie sieht überall Rauch und Feuer.

Erdgeschoss





Pool	
Öltank	
Hydrant	
Autos	
Terrasse	
Haus	
Pferd	